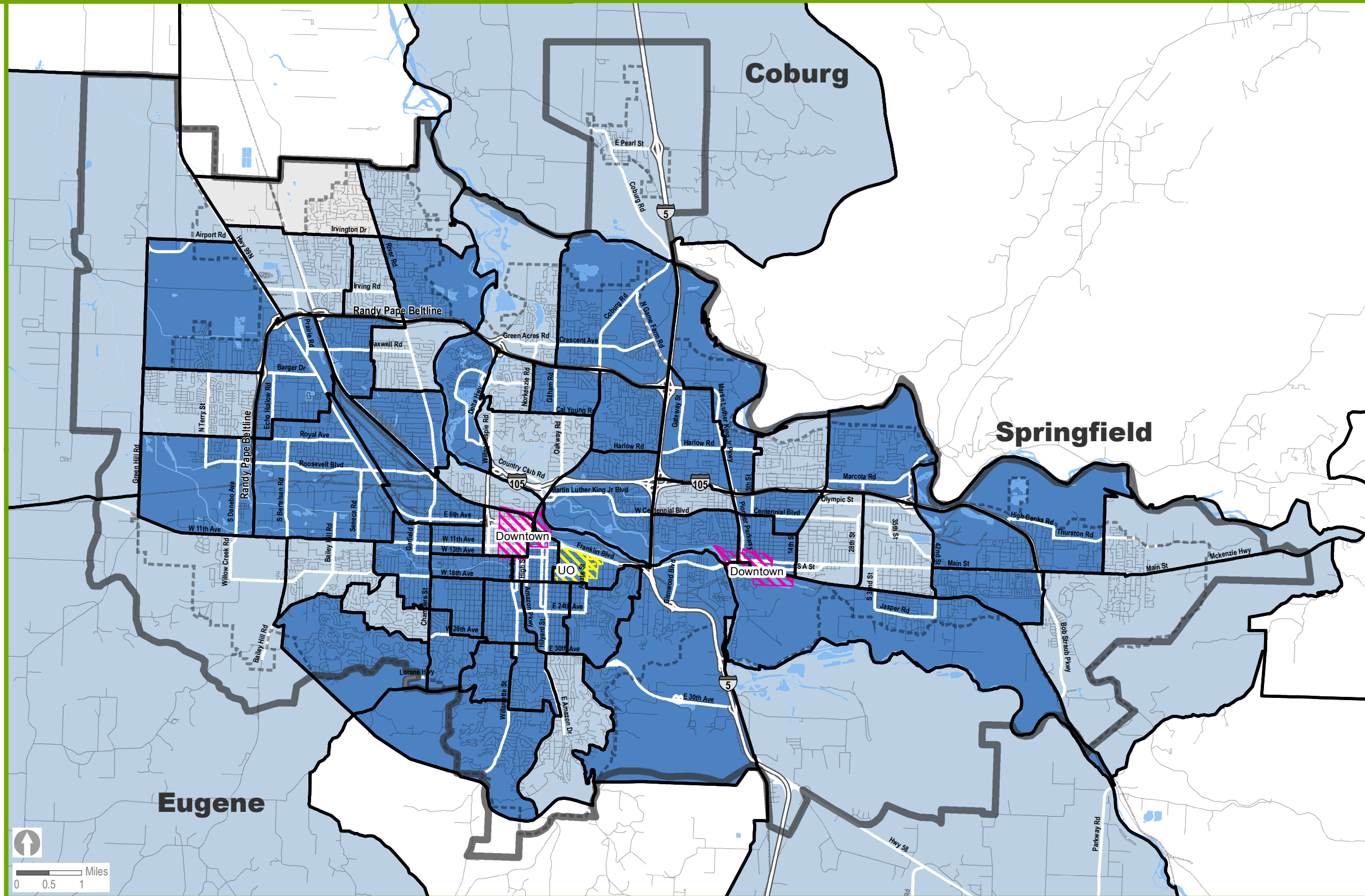


Equity & Opportunity Assessment Housing Access

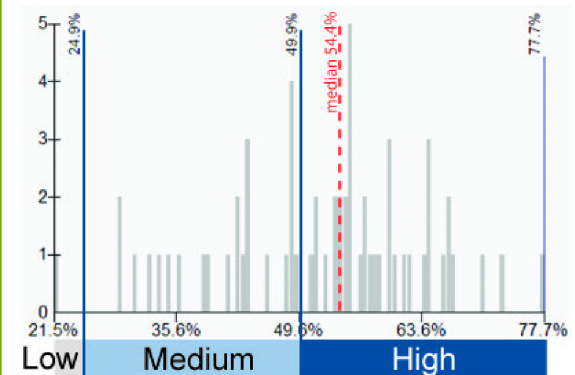
Renter Cost Burden



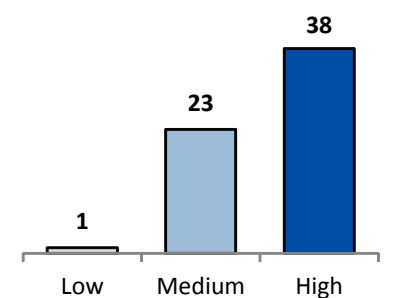
This map shows the percent of renter housing units that have a housing cost burden. About 55% of renter households in the Metropolitan Planning Organization area census tracts have a housing cost burden.

A household experiences a housing cost burden when they spend more than 30% of their annual gross income on housing costs.

For this map, the data was classified with defined breaks of 0-24.9%, 25-49.9%, and 50% and over. This is the same classification as the owner housing cost burden map for comparison purposes. A histogram is also included to show that the data is not necessarily distributed equally across these three categories. About 76% of renter households with a housing cost burden are in the top 38 tracts in the highest percentage category.



The chart below shows the number of tracts in the Metropolitan Planning Organization Area that have low, medium, or high percentages.



Map date: 12/26/13 Map data: U.S. Census Bureau, Census 2007-11, Table B25070
 Caution: This map is based on imprecise source data, subject to change, and for general reference only.
 The work that provided the basis for this map was supported by funding under an award with the U.S. Department of Housing and Urban Development. The substance and findings of the work are dedicated to the public. The author and publisher are solely responsible for the accuracy of the statements and interpretations contained in this publication. Such interpretations do not necessarily reflect the views of the Government.

- Census 2010 Tracts
- Metropolitan Planning Organization Area boundary
- Urban Growth Boundaries

- Percent of Renter Occupied Housing Units with a Housing Cost Burden**
- Low: 21.5% - 24.9%
 - Medium: 25% - 49.9%
 - High: 50% - 77.7%